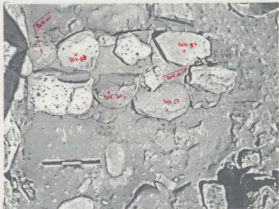


RESERVE MUSEUM
Loc. n. 370-378, canal 32/100

21/7/96

Scale 1:25

E. CHASSAGNE
K.E. 96.1



246



RELEVÉ NUMÉRIQUE
Lm. 4.500, 10000 37/62
21/2/96

relevé
KHEGG.2

compte de 1.2.11





REVUE HISTORIQUE

24/7/96

33/27 loc 37c

↓ N

⑤
⑥



4
Khd96.14

	1	2	3	4	5
ALP.	204.80	204.11	204.80	204.09	204.07
H	195	152	118	149	118
L	565	248	327	329	300

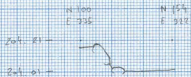


Kh 26

24/7/96

33/27 loc 978 cf photo numérique

1. 20'



Seleni nainifae

24/7/96

33/27.8 loc 2876 378

N ↘



	③	①	④	②
ALT	204.01	203.23	204.02	204.01
N.	378	48	324	341
E.	444	437	10	33

4
Khe96.5

Pb coordonées

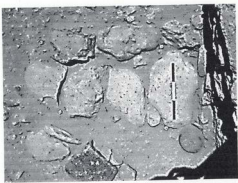
of J. Gouyette

H ↗

301229 20 0220 200
301229
301229

(1)

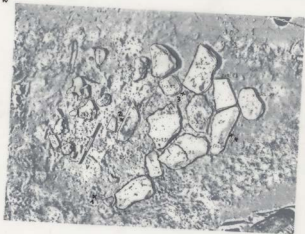
(2)



Kh 96 26/7/96
Klasi huminifera

33/27 loc 978

41



	1	2	3	4
ALT	2=2.31	2=2.31	2=1.19	2=1.19
N	268	222	294	271
Z	173	173	56	51

redes...

Kh 96.3



КРАС
20/5/00

КРАС ПОВЕРТ

22/02

105 232



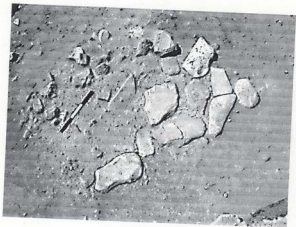
15

kh96. 26/7/96

33/27 loc 978
zone elevée

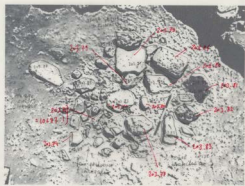
↙ N





40

Pitoté, Aude, 30/7/96 13/2/99 9782

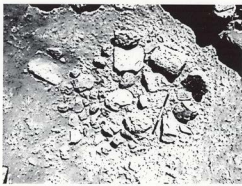
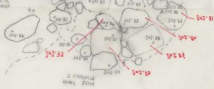


ALT	1	2	3	4
A	200	175	170	170
E	225	215	210	205

30/7/96 13/2/99 CAT 10197

relevé
FhE 96.4

20/10/96



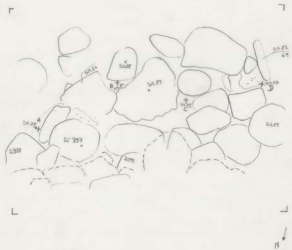
révisé
FhE 96.4

Kn 96

29/8/96

13/27

loc 987/4)



Kh 36

29/8/96

loc 997(2)

33/27

997.2





Kn 93

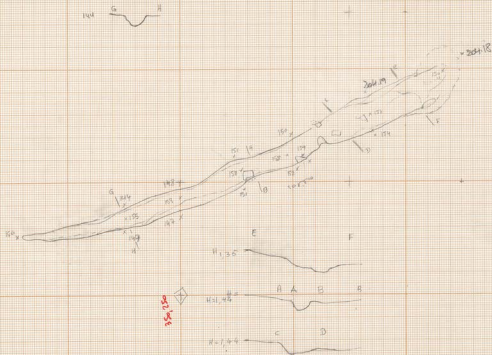
1/8 1993

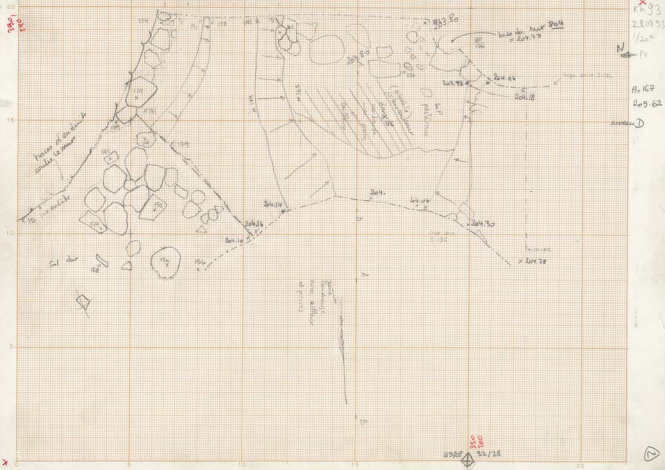
1/4

long 889

H 205.53

LES PAPIERS CARON - FRANCE





Kh 93 22/8/93

no Niveau D

H = 205.62

370, 250



10

35

30

20

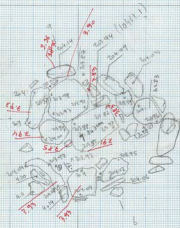
320, 220



LES PAPIERS, CAMBON - FRANCE

Kh96 ← N 1/20 974 14/7/96 e 976 ni D

970, 975



300 gouch



- 204.20
- 204.10
- 206.00
- 207.20
- 207.20

N	E
125	125
34	91
30	52
12.5	52

200, 205

33122
33122
33122
33122



KH 76

29/8/96

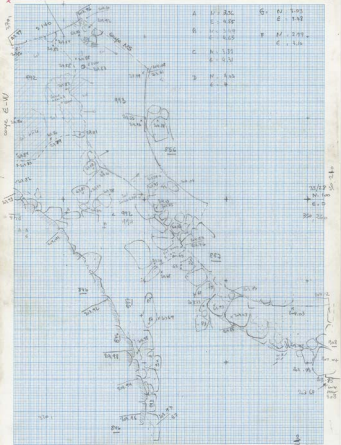
1/2

carte 33/27-8

oriental

N

2



A	N. 3.30	G.	N. 3.05
	E. 4.05		E. 2.40
B.	N. 3.40	H.	N. 2.75
	E. 4.05		E. 3.05
C.	N. 3.35		
	E. 3.30		
D.	N. 3.30		
	E. 3.30		

coupe E-W

23/29
N. 3.05
E. 3.05
30/26

110

102

102

102

102

102

102

102

